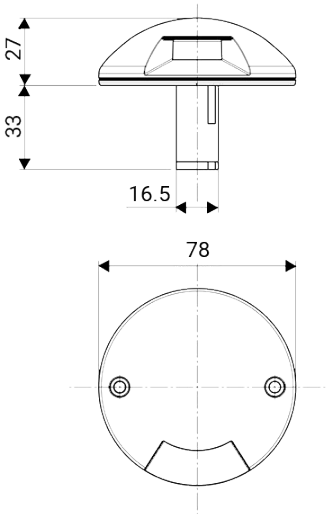
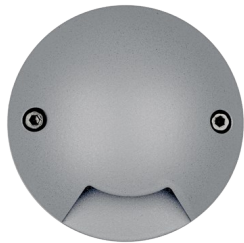


SQUEEZE 77 1x EMISSION LED 3W — 24V
1453



Outdoor walk-over luminaire for ground surface installation

Max. load pressure 500 kg

Material: low copper content die-cast aluminium

Diffuser: UV resistant opal polycarbonate

PWM dimmable with dedicated external driver, compliant with EN 61347-2-13 Standard, to be ordered separately

External 24V DC driver for parallel connection, compliant with EN 61347-2-13 Standard, to be ordered separately

Light source: LED unit / Side emitter optic to direct the light along the ground surface

Anticorodal anodized aluminium cable gland with watertight internal resin coating - AQUASTOP system / Luminaire supplied with 1,5 m polyurethane buriable cable 2x0,8

Stainless steel screws

Finish with double painting after anti-corrosion treatments: epoxy-based primer and polyester powder coating

On request versions (additional code):
MT7 7 m cable length

Dimensions	Ø 78 x H 27 mm
Light Source	LED
Power	3 W
Voltage/Frequency	24V DC
Light output source	300 lm
LUMEN OUTPUT	65 lm
System efficiency	21 lm/W
Color Rendering Index – CRI	≥80
LED energy class	D
Electrical insulation class	Class III
IP rating	IP 67
Impact resistance rating	IK 10 (20 joules)
Norms	EN 60598-1 +2-1
Weight	0.25 kg
Certifications	CE UK CA

CODE OPTIONS

FINISH

AG ALUMINIUM GREY
AN ANTHRACITE

on request:

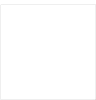
CO CORTEN
BR BRONZE

COLOUR TEMP.

27K 2700K
3K 3000K
4K 4000K

OPTIC

standard 70°



SQUEEZE 77 1x EMISSION LED 3W — 24V

1453
ACCESSORIES

ACCESSORIES
24V CONTROL GEAR



1924

ACCESSORIES
24V CONTROL GEAR



1925

ACCESSORIES
PWM DRIVER



1953